

# EDGE™

Wireless. Connected. Sensors.



## Temperature Intelligence™

# EDGE™ S-400

Wireless, portable sensors for monitoring and controlling cold chain performance

- Bluetooth® enabled temperature sensor
- Check temperature readings wirelessly from smartphone or tablet
- Single or multi-use with up to 12 month battery life
- Internal sensor and memory for 16,000 datapoints
- Wireless access through packing materials, containers, cold equipment and rooms
- Cloud sharing and storage
- Light, compact design to fit easily in packaging

EDGE S-400 is an easy to use, practical and cost-effective solution for wireless temperature tracking. Small enough to fit into most any size and type of container, cooler or enclosure, it can be used to monitor cold chain performance for temperature-sensitive products without compromising the shipment packaging integrity since it can be read through the container walls. Adhesive backing makes placement simple and reliable.

Embedded sensors and Bluetooth® wireless connectivity provide temperature datalogging continuously through the product's journey. Using the free EDGEVue™ app, temperature readings and geolocation data can be easily accessed and shared on demand with iOS and Android smartphones and tablets.

In addition, the temperature data from EDGE can automatically be accessed and uploaded to the cloud using the EDGEBridge™.



Download the free EDGEVue™ app from iTunes or Google Play

EDGEVue™ provides easy user access to establish customized parameters for each use of the EDGE S-400, including alarms, datalogging intervals, startup options, and time and temperature units.

Data can be transmitted to EDGECloud, which can be accessed 24/7 from anywhere through the EDGEVue Web app for viewing and reporting.

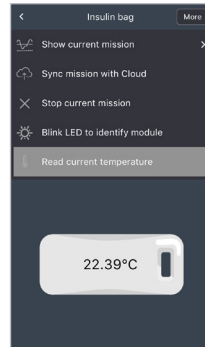
# EDGE™

Wireless. Connected. Sensors.

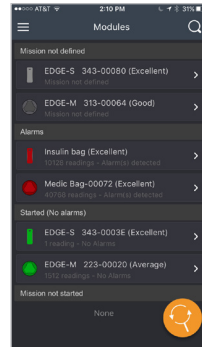


## Temperature Intelligence™

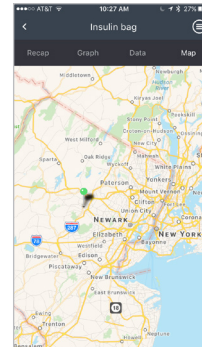
### EDGE™ S-400



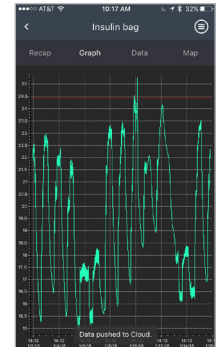
Use EDGEVue™ to set-up datalogging profile and preferences



EDGEVue™ automatically detects EDGE S-400 devices within Bluetooth range



Uses smartphone/tablet GPS to track routes with detailed information



Connect to EDGE S-400 to monitor data on demand, anywhere along the delivery route

#### Sensor Specifications

Single or multi-use, portable

**Temperature Range:** -30 to +70°C (-22 to +158°F)

**Accuracy:** +/- 0.3°C

**Resolution:** 0.01°C

**Temperature Display:** °C or °F, selectable

#### Dimensions

L 81 x W 43.4 x D 8.2 mm (3.2 x 1.4 x 0.3 in)

**Thickness:** 0.3 in (8.2 mm)

**Weight:** 0.9 oz (25.2 g)

**Case:** ABS, IP30 protection, adhesive backing for mounting

**Serial Number:** Unique for each module

#### Battery

**Battery:** Li Manganese dioxide / Organic electrolyte, non-replaceable

**Battery Life:** Up to 12 months (dependent on datalogging frequency)

**Shelf Life:** Minimum 12 months prior to activation

#### Datalogging Functions

**LED indicator:** Alarm status and communication

**Alarm Limits:** Programmable high and low, with delay

**Startup options:** Immediate, Delayed with programmable threshold

**Datalogging intervals:** Programmable - 15 seconds to 59 seconds (1 second intervals) OR 1 to 255 minutes (1 minute intervals)

**Datalogging stop:** Programmable – memory full, or overwrite oldest values

**Date/Time Stamps:** Programmable local time or GMT

**Memory Internal:** up to 16,000 datapoints

**Reports:** CSV and PDF file formats

#### EDGEVue™ and Wireless Specifications

**Bluetooth® 4.2 technology (5.0 Ready)**

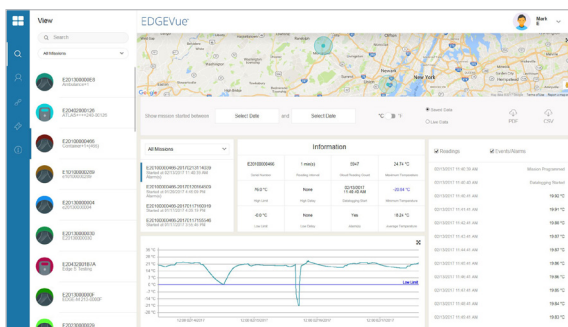
**Wireless range:** Line-of-sight, up to 50 meters, 164 feet

**Device Compatibility:** Program and read with iPhone 4S or higher, iPad 3 or higher, and Android 4.4 and higher

**Detection:** Wireless access through isothermal packaging, refrigerated vehicle siding, freezers, refrigerators and cold rooms (may depend on wall thickness and environmental conditions)

EDGEVue App Free on iTunes and GooglePlay, automatically detects EDGE devices within Bluetooth range. Automatic data collection with EDGEBridge.

**Cloud Storage and Access:** Store unlimited data on EDGECloud and access through the EDGEVue Web application for viewing and generating reports.



Access, view and manage information from EDGE sensors using the EDGEVue web application.

COMZ EDGE S-400 Product Sheet Rev.3

Temptime Corp.  
116 The American Road, Morris Plains, NJ 07950  
973-630-6000

temptimecorp.com