

## Temperature Intelligence™

# EDGE™ W-200

### Long-range, wireless temperature and humidity sensors

The EDGE™ W-200 offers unique connectivity features for very long range and expanded installations. The technology used in the W-200, is LoRa™, the latest technology for IoT (Internet of Things) devices. This technology gives multiple advantages to this new solution like lowest-cost connectivity, long battery life, easy installation and ease of use.

- LoRa™ technology with ultra long range connectivity: up to 9 miles (15 km)
- Bluetooth® Smart technology with reduced battery consumption and advanced security
- Up to 4,000 readings stored in device
- Define your missions using our free EDGEConnect™ mobile app on your smartphone or tablet
- Review and analyze your data using our EDGEConnect Web-based application

#### Sensor Options:

Internal Temperature:	0°C to +50°C (32°F to +122°F)
External Temperature:	-40°C to +80°C (-40°F to +176°F)
	-40°C to +120°C (-40°F to +248°F)
	-100°C to +150°C (-148°F to +302°F)
	-200°C to +50°C (-328°F to +122°F)
External Temp & Rel Humidity:	-40°C to +100°C (-40°F to +212°F)/ 0 to 99% RH, non-condensing

#### Calibration Options:

- Non-accredited standard calibration
- ISO/IEC 17025-accredited laboratory
- Traceable to NIST: certification using a NIST-calibrated reference chain

**Overall Range:**  
-200°C/+150°C (-328°F/+302°F)  
0 to 99% HR

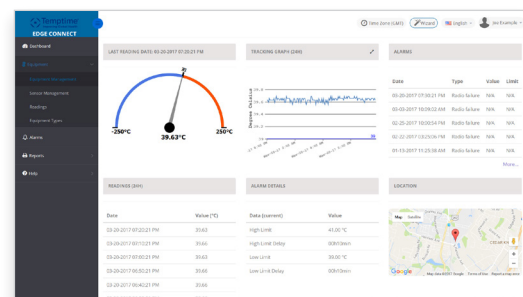


Download the free EDGEConnect™ app from iTunes or Google Play



**Temptime W-200 records temperature and humidity. With LoRa™ latest technology embedded, W-200 can cover large installations, and gives fast access to information.**

**Use Temptime free EDGEConnect mobile application to define your missions and start the recording of up to 4,000 readings.**



**Use your Web browser and connect to EDGEConnect to review, analyze and report the complete history of readings.**

## Temperature Intelligence™

# EDGE™ W-200

### Physical description

- Height:** 5.22 in. (132.7 mm), 8.22 in. (208.7 mm) including antenna
- Width:** 1.33 in. (34 mm)
- Length:** 2.53 in. (64.2 mm)
- Weight:** 5.3 oz. (150 grams)
- Casing:** ABS
- Probe:** Multiple digital and Smart Pt100 options to choose from

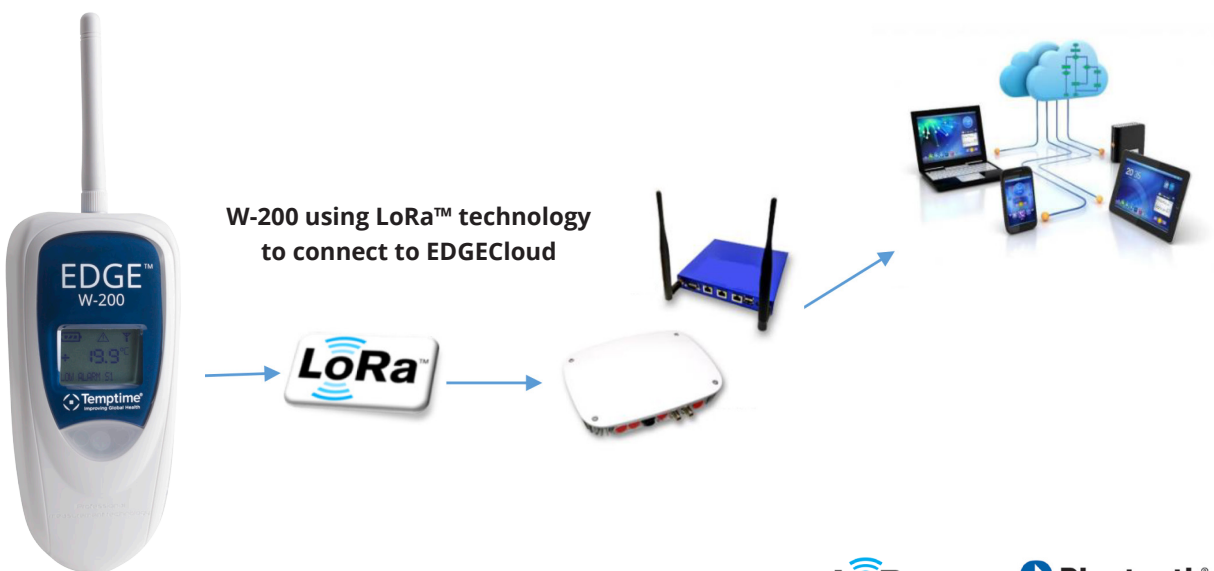
### Battery

- Diameter (max):** 0.67 in (17.13 mm)
- Height (max):** 2.00 in (50.9 mm)
- Type:** Lithium-thionyl chloride (Li-SOCl<sub>2</sub>)
- IEC designation:** LS17500

### Specifications

- Blue/red status indicators: blue Bluetooth® Smart communication signal / red: W-200 is alarming
- Powered by user-replaceable LS 17500 Lithium battery
- Estimated battery life: 2 years\*
- Product protection index: IP65 (IP67 enclosure available)
- Guaranteed 1 year (return to manufacturer)
- Bluetooth wireless signal information displayed on EDGEConnect mobile app.
- Reading interval from 4 min up to 4 hours
- Continuous recording mode
- Programmable Temperature and Humidity high and low limits
- Customizable module name up to 15 characters
- Readings stored in device and on EDGECloud server
- Reports generated in Excel and PDF format
- Readings shown with GMT international time format supported
- Values in °C and °F

\* When 10 minutes reading interval is set and a single sensor is used



COMM EDGE W-200 Product Sheet Rev.2