

Temperature Intelligence™

EDGE™ W-200

Long-range, wireless temperature and humidity sensors

The EDGE™ W-200 offers unique connectivity features for very long range and expanded installations. The technology used in the W-200, is LoRa™, the latest technology for IoT (Internet of Things) devices. This technology gives multiple advantages to this new solution like lowest-cost connectivity, long battery life, easy installation and ease of use.

- LoRa™ technology with ultra long range connectivity: up to 9 miles (15 km)
- Bluetooth® Smart technology with reduced battery consumption and advanced security
- Up to 4,000 readings stored in device
- Define your missions using our free EDGEConnect™ mobile app on your smartphone or tablet
- Review and analyze your data using our EDGEConnect Web-based application

Sensor Options:

Internal Temperature:	0°C to +50°C (32°F to +122°F)
External Temperature:	-40°C to +80°C (-40°F to +176°F)
	-40°C to +120°C (-40°F to +248°F)
	-100°C to +150°C (-148°F to +302°F)
	-200°C to +50°C (-328°F to +122°F)
External Temp & Rel Humidity:	-40°C to +100°C (-40°F to +212°F)/ 0 to 99% RH, non-condensing

Calibration Options:

- Non-accredited standard calibration
- ISO/IEC 17025-accredited laboratory
- Traceable to NIST: certification using a NIST-calibrated reference chain

Overall Range:
-200°C/+150°C (-328°F/+302°F)
0 to 99% HR

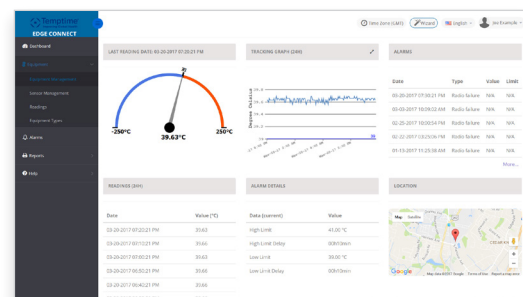


Download the free EDGEConnect™ app from iTunes or Google Play



Temptime W-200 records temperature and humidity. With LoRa™ latest technology embedded, W-200 can cover large installations, and gives fast access to information.

Use Temptime free EDGEConnect mobile application to define your missions and start the recording of up to 4,000 readings.



Use your Web browser and connect to EDGEConnect to review, analyze and report the complete history of readings.

Temperature Intelligence™

EDGE™ W-200

Physical description

- Height:** 5.22 in. (132.7 mm), 8.22 in. (208.7 mm) including antenna
- Width:** 1.33 in. (34 mm)
- Length:** 2.53 in. (64.2 mm)
- Weight:** 5.3 oz. (150 grams)
- Casing:** ABS
- Probe:** Multiple digital and Smart Pt100 options to choose from

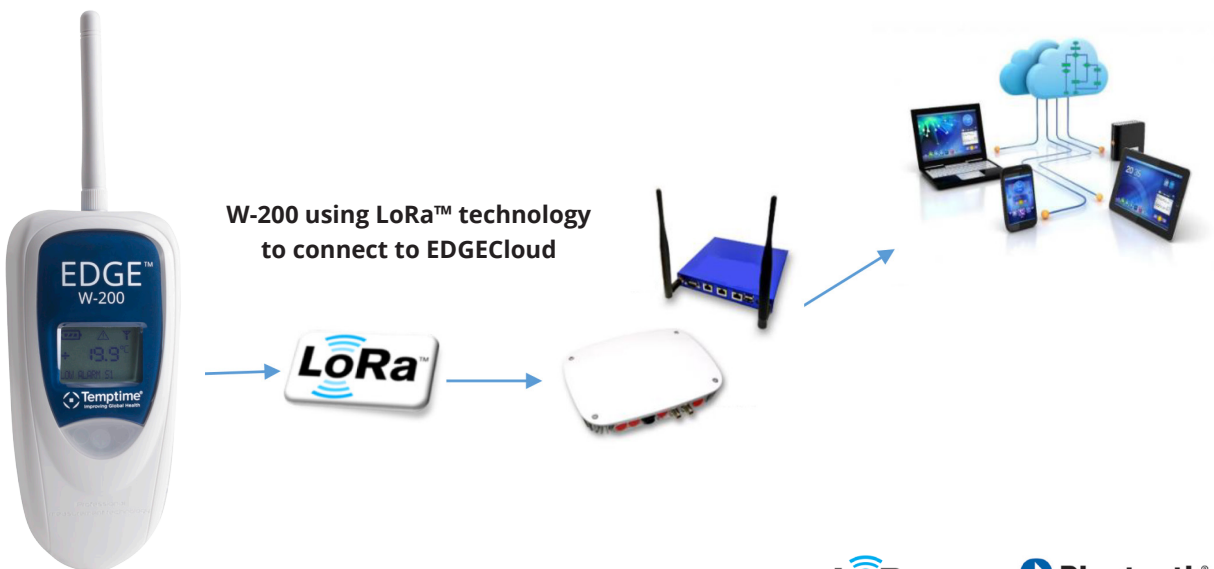
Battery

- Diameter (max):** 0.67 in (17.13 mm)
- Height (max):** 2.00 in (50.9 mm)
- Type:** Lithium-thionyl chloride (Li-SOCl₂)
- IEC designation:** LS17500

Specifications

- Blue/red status indicators: blue Bluetooth® Smart communication signal / red: W-200 is alarming
- Powered by user-replaceable LS 17500 Lithium battery
- Estimated battery life: 2 years*
- Product protection index: IP65 (IP67 enclosure available)
- Guaranteed 1 year (return to manufacturer)
- Bluetooth wireless signal information displayed on EDGEConnect mobile app.
- Reading interval from 4 min up to 4 hours
- Continuous recording mode
- Programmable Temperature and Humidity high and low limits
- Customizable module name up to 15 characters
- Readings stored in device and on EDGECloud server
- Reports generated in Excel and PDF format
- Readings shown with GMT international time format supported
- Values in °C and °F

* When 10 minutes reading interval is set and a single sensor is used



COMM EDGE W-200 Product Sheet Rev.2