

Temperature Intelligence™



Protecting Patient Outcomes Door-to-Door

US Specialty Care



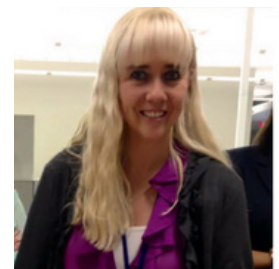
A leader in the industry, US Specialty Care (USSC) has been providing specialty pharmacy services for over 10 years across all 50 states. Their objective is to give patients with chronic health conditions easier access to the complex drug therapies they need. Continually seeking innovative best practices, USSC turned to Temptime when investigating temperature monitoring solutions to help ensure the medications they deliver maintain their integrity throughout shipping.

Business Challenge

USSC works with a broad range of specialty medications used to treat chronic conditions ranging from anemia and psoriasis, to cancer and rheumatoid arthritis, to HIV/AIDS and infertility, among others. Many of these drug therapies, particularly biologics, are highly temperature

sensitive and could lose efficacy if not kept within a specific temperature range.

According to Marlette Oelofsen, CSP, Pharmacist in Charge at USSC, the company ships medications from their Florida and Colorado locations to patients in all 50 states. When shipping from states with such different climates, it can be challenging



Marlette Oelofsen, CSP.,
Pharmacist in Charge

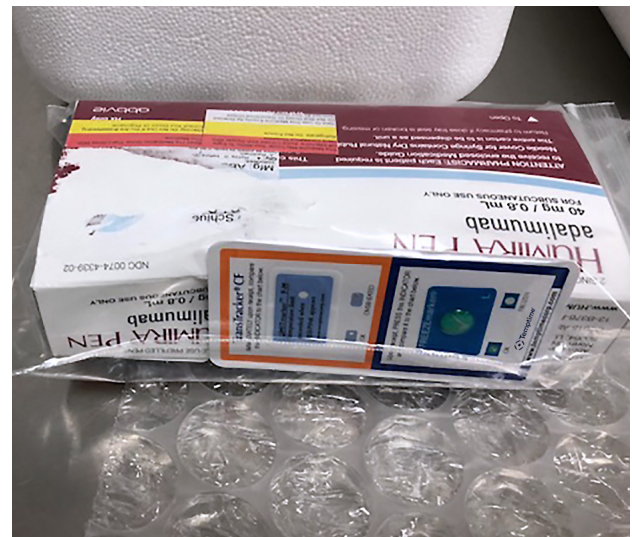
to develop standardized shipping protocols that ensure medications maintain appropriate temperatures throughout transit. There's literally hundreds of different courier routes to consider, she says, which can be further complicated by unexpected shipping and delivery delays.

“Risk of compromising the integrity of the medications exists throughout the entire shipping process,” Ms. Oelofsen continues. “At pick up, for instance, packages might sit outside on the loading dock for a period of time before the courier arrives. They then typically go through UPS’s hub to the destination city. Temperatures within the courier’s delivery trucks and airplanes as well as at the shipping hub are uncertain and packages may be subjected to outdoor conditions at several points along the way—there is risk of exposure to extreme heat or cold at virtually every stage.”

The Solution

USSC uses Temptime’s EDGE™ data loggers and TransTracker® CF visual temperature indicators to gain logistical insight into temperature controlled shipping methods and safeguard against the administration of medication exposed to potentially damaging temperatures. “As a pharmacist, patient safety is my primary concern,” says Ms. Oelofsen. “When we decided to incorporate temperature monitoring devices, we were looking not only for the best and most accurate devices but also for technology that was easy for the pharmacy to use and for our patients to understand.”

They began by conducting extensive performance qualification (PQ) testing with their packouts using different types of data loggers and temperature trackers to monitor the temperature of test shipments throughout their service area. “We found that Temptime’s EDGE M-300 and S-400 programmable data logging devices were easy and quick to set up – and provided us with detailed yet easily comprehensible data,” Ms. Oelofsen explains. “The EDGE M-300 has a replaceable battery, so it can be reused indefinitely, and since the devices communicate via Bluetooth®, you can change settings and view data even through packing materials.”



In addition, she says Temptime’s TransTracker CF temperature indicators are included in shipments to give patients a clear visual alert if the package has exceeded the temperature range during transit. They chose the TransTracker CF for its accuracy, also noting they were easier to use and interpret than others they tested. Some brands require indicators be manually activated before use, adding an extra step for the packing team and potential risk that someone might forget

to activate the device – leading to confusion or false positives. Other indicators lacked simplicity in design and were difficult for patients to understand, increasing phone calls to the pharmacy. After considering all options, USSC felt that TransTracker CF was the obvious best choice for them.

“Without indicators, we would have no definitive way of knowing whether or not a package reached unsafe temperatures during transit – meaning any patient concerns about the temperature of their medication would result in a very costly reshipment for the pharmacy as well as delayed treatment for the patient.”

Temperature data for PQ testing was recorded by the EDGE M-300 sensor every 10 minutes over a 36+ hour period. Data was uploaded to EDGEVue™ App to generate this graph. Note the 46°F High Limit (red line) was exceeded for approximately .25 hours.

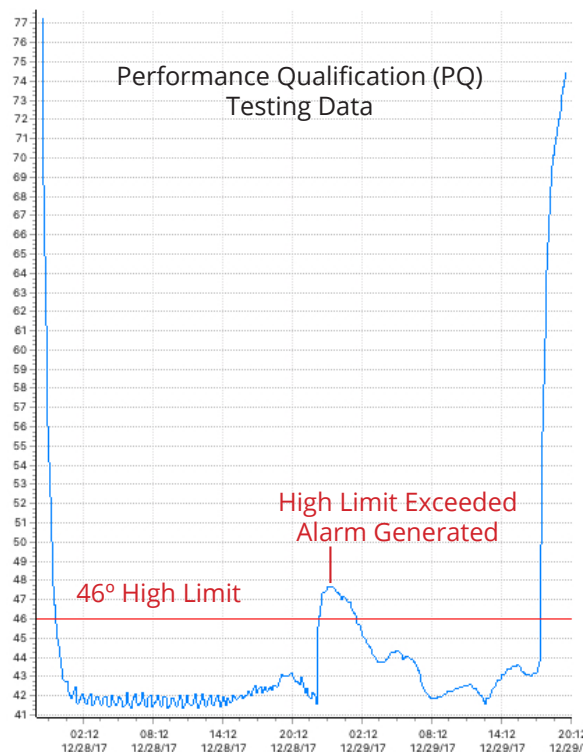
USSC's Testing Methodology

To simulate actual shipments as closely as possible, USSC places expired medications within their packouts during testing. They test a wide variety of scenarios with numerous packout sizes considering different points of origin and destination as well as various shipping routes used by the pharmacy. Packing instructions are precisely followed and additionally include two EDGE data loggers that have been programmed to record temperature at predetermined intervals and provide alerts when particular temperature limits are exceeded. One EDGE device is placed inside the cooler by the medication to measure internal temperature. The second is placed 'outside' the package, either wedged in between the outside of the cooler and its surrounding corrugated box or in a padded envelope attached to the outside of the package to measure the external ambient temperature.

Each test is replicated as a control for the first, and tests are conducted several times a year to ensure the impacts of seasonal climate change have been considered.

The Result

“Both physicians and patients have told us how much they appreciate the extra measures we take to give them peace of mind with at-a-glance confirmation that medications have remained viable throughout shipping,” says Ms. Oelofsen. “We now use TransTracker CF indicators with all refrigerated shipments and other high-risk medicines. Considering the critical nature of the medications we dispense and the unpredictable risks associated with shipping, we feel that it is



Temperature data for PQ testing was recorded by the EDGE M-300 sensor every 10 minutes over a 36+ hour period. Data was uploaded to EDGEVue App to generate this graph. Note the 46° F High Limit (red line) was exceeded for approximately .25 hours.

the right thing to do for our pharmacy and our patients.”

USSC pharmacists counsel new patients on the importance of the temperature indicator and provide guidance on interpreting it as a part of the initial onboarding process. Additionally, literature is included with each shipment explaining how to read the indicator and what to do if it has triggered.

Temptime’s EDGE devices have also proven extremely valuable to USSC’s quality control processes. “It’s been a challenging year, with extreme temperatures seen across the country. This winter was one of the coldest on record and we had several concerns.” This led USSC to conduct testing, using the EDGE devices to pinpoint exactly what happens with shipments during extreme cold. “We thought packages were being exposed to freezing temperatures at their point of origin in Colorado, but because of the information we received from our EDGE data loggers – we discovered the issue was happening at the courier’s hub in Kentucky,” she explains. “With that knowledge, we were able to make educated changes to the packout and eliminate the problem.”

The result? USSC has successfully decreased the number of medication reshipments, delivering significant savings for the pharmacy, reducing drug waste and improving patient satisfaction. Ms. Oelofsen says she feels confident they have the tools needed to make informed decisions about packouts.

“When purchasing temperature monitoring equipment, working with a reputable company who can provide information regarding calibration and accuracy is critical, but so is good customer support. Temptime understands the specific needs and challenges of the specialty pharmacy industry and are always available to answer questions and provide assistance. It’s

refreshing to work with a company that stays ahead of technological advancements and shares our mission to protect patients and elevate the quality of healthcare. Temptime has proven they can deliver exactly what we need.”

About USSC

US Specialty Care (USSC) is an industry-leading provider of specialty medications offering advanced prescription services for the management of chronic conditions through complex drug therapies. The 2017 winner of the Specialty Pharmacy Patient Choice Award, USSC has been providing specialty pharmacy services for over 10 years in all 50 states, with an additional network of distribution pharmacies to serve all of their clients’ specialty care needs.



The USSC program is designed to improve the health outcomes and quality of life for patients living with chronic conditions. They offer a wide variety of services that focus on therapeutic optimization while providing cost containment with measurable results. They work directly with their clients to tailor a specialty program that will meet their plan’s unique goals, and provide the highest levels of personalized care and support for patients.

About Temptime

Founded in 1987, Temptime scientists developed the first miniaturized technology to monitor temperature exposure of vials containing the oral polio vaccine. This time-temperature monitoring device continues to be the only technology that meets the strict specifications of the world’s leading health organization for distributing vaccines to developing countries. It satisfies the World Health Organization’s (WHO) PQS VVM performance specification, and follows WHO’s guidelines for manufacturers of temperature monitoring devices.